

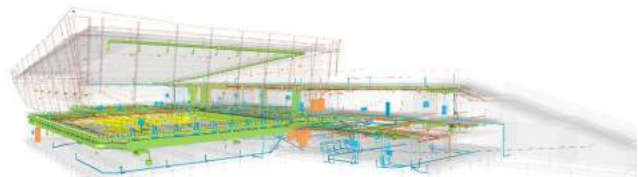


## BIM – BUILDING INFORMATION MODELING

Building information modelling, BIM, is a process used during the lifecycle of a building, from planning to operation and maintenance. BIM design model is a digital prototype of a building, a model made up of building components that contain information about the properties of the actual building components.

### **BIM provides an opportunity to:**

- increase the quality of the design
- streamline the construction process
- build more environmentally friendly structures
- reduce energy consumption during operations
- streamline the operations and maintenance of a structure



### **BIM AND VERKÍS**

Verkís has set its goal to be one of Iceland's leading consulting firm in BIM, providing high-quality, professional, and internationally recognized BIM consulting services as well as being an active participant in professional development as the BIM is carried through in Iceland. Verkís has been involved with multiple BIM projects in Iceland and Norway.

### **BIM EXECUTION PLAN**

At Verkís, each BIM project is approached based on the needs of each project. BIM uses are selected for the project based on an analysis of their value to the project. Processes are developed for the overall design process and individual BIM uses. The processes highlight workflow and data exchanges. At these data exchanges requirements to model Levels of Development are defined. Finally, the infrastructure for the project's BIM implementation is defined. This preparatory work is summarized in the BIM execution plan. The execution plan is a project management tool for BIM projects.

### **PROGRESSIVE DESIGN**

With the use of BIM models in the initial phases of a design, the designers are given the opportunity to perform engineering analyses and make more informed decisions earlier in the design process. Decisions that can have a major impact on the quality and operations of a building and can be too late to make at later stages. Verkís emphasizes mastering these analyses and applying them in projects where appropriate.

## CENTRALIZED ACCESS TO INFORMATION

It is important to ensure centralized access to the latest BIM models. At Verkís, this is done using cloud based services that supports centralized coordination. Centralized coordination processes enhance communication and coordination of models throughout the design phase. Verkís subscribes to the cloud based service BIM 360 Glue and BIM 360 Docs and can integrate those solutions in all of the company's BIM design projects

## BIM PROJECTS



Veröld - Vigdís' house



The College of Mosfellsbær



Archive for Historical Documents



Nursing home, Tretten, Norway



Heggedal School, Asker, Norway



Holmen Swimming Pool, Asker, Norway



Sola Airport extension, Stavanger, Norway



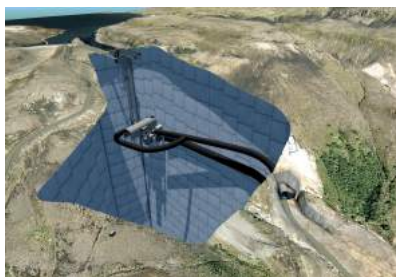
Swimming pool, Drøbak, Norway



Leifur Eiriksson airport extension



Bergen biogas, Norway



Búrfell Hydropower plant extension

### BIM bruksområder

- Existing Conditions Modeling
- Design Authoring
- BIM Modeling
- 3D Coordination
- Design Reviews
- Cost Estimation
- Phase Planning
- Structural Analysis
- Lighting Analysis
- Energy Analysis
- Mechanical Analysis
- Fire Safety Design
- Sound Analysis
- 3D Control and Planning